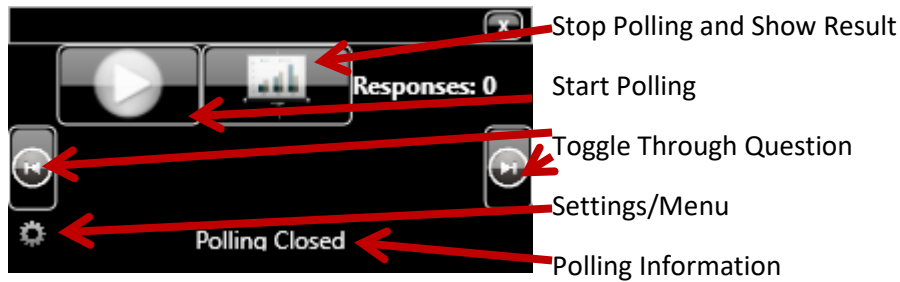


AppliVote 3.2

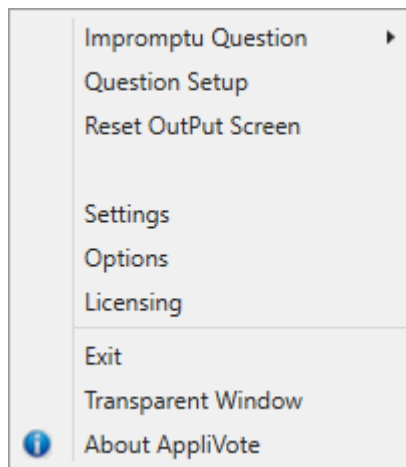
Contents

1. Starting Screen	2
2. Menu	2
3. Question Setup	3
4. Settings	4
5. Options	5
6. Licensing	6
7. How to Vote.....	6

1. Starting Screen



2. Menu



Impromptu Question: This allows you to ask ad-hoc Single Choice questions without pre-setup the Question type. This can also be accessed by pressing CRL+<Number of Options> when the Main windows has focus (for example: CTR+8 will insert and Impromptu Question with 8 Options).

Question Setup: This allows you to Pre-setup question and setup Titles for your questions. The choices here are Single Digit, Multi Choice, Scale from 0.

Reset OutPut Screen: Will set the Output Screen to it's default Position. The output Screen can be moved and customized when first displayed and will save it's size and position when closed. Full

Screen is here available through the Options Tab.

Settings: This allows you to connect your Reply® Interact Hardware.

Options: In the Options you can change various settings for the Output and Reporting.

See Chapter:5

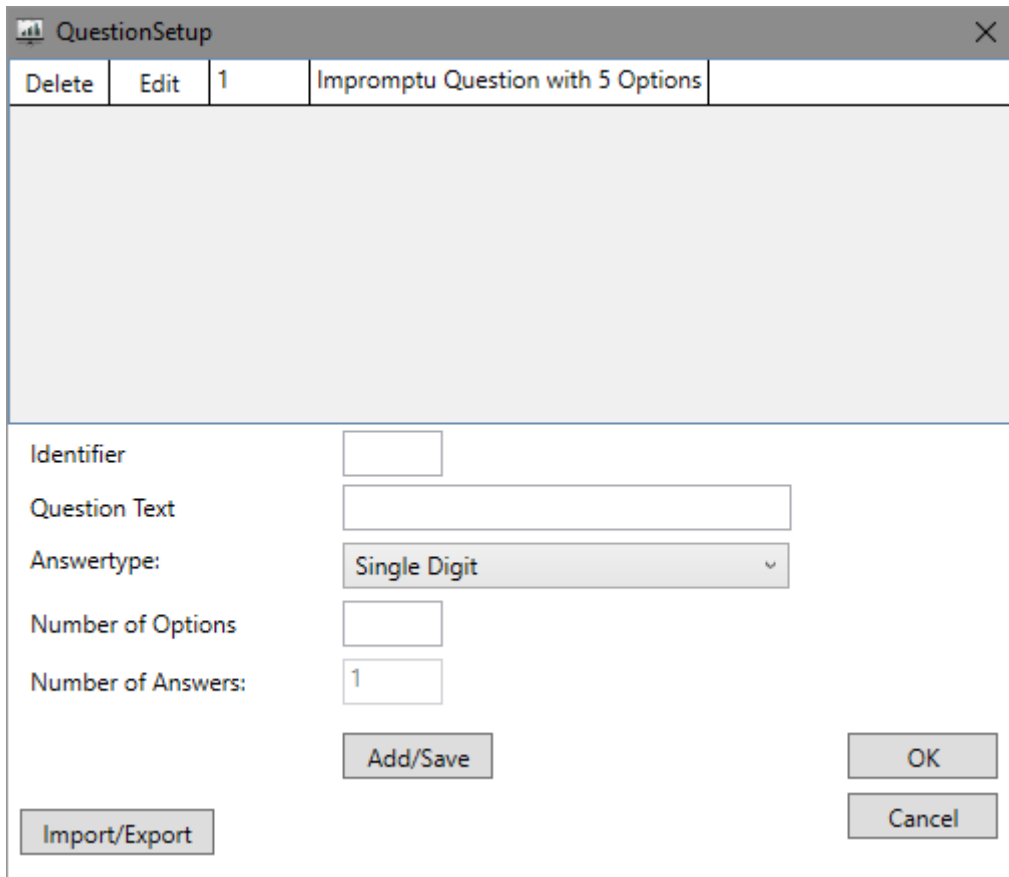
Licensing: When working with more than 100 Keypads, you would require a license that allows you to use more than 100 Keypads. If you need a license, please contact our support@infowhyse.com

Exit: Will exit AppliVote

Transparent Window: Will make the Main Application Semi Transparent.

About AppliVote will display the Version information.

3. Question Setup



The Question Setup allows you to Import, Export or create Questions.

Identifier: This is an internal Identifier. We suggest to use a unique Identifier.

Question Text: This contains the Title for your Question.

Answer Type:

Single Digit: Select 1 out of maximum up to 10 Options

Multi Digit: Select N out of M (Maximum up to 10) Options, whilst N must equal or must be lower than M

Scale from 0: Allows your to insert an Answer between 0 and X.

After creating your Questions, Export your current Question Catalogue to be able to reuse without re-creating it every time.

4. Settings

Settings
✕

Autodetect

Model	Name	LowestKeypad	HighestKeypad	BaselD	Channel
99	Simulation 1	1	100	0	0

OK

Cancel

By default AppliVote is starting in Simulation Mode. Please run Autodetect here to detect your base station.

Settings
✕

Autodetect

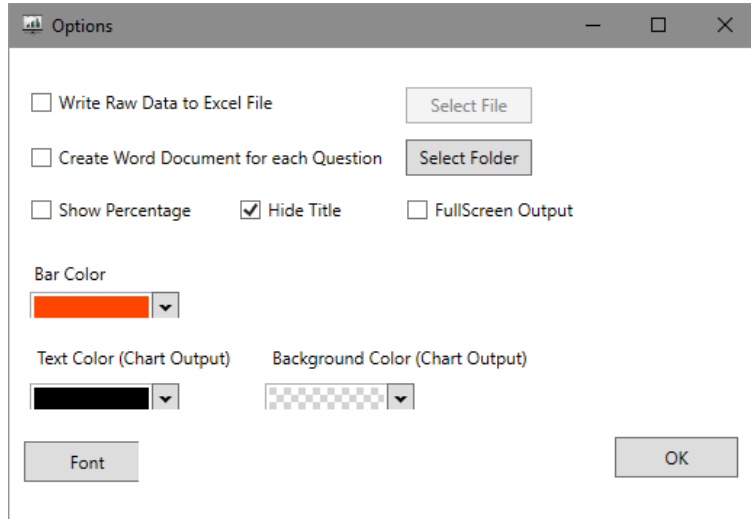
Model	Name	LowestKeypad	HighestKeypad	BaselD	Channel
1	Interact 1	1	100	1	2

OK

Cancel

When the Base station is found, it will be displayed in the Table Window. If you are not working with 1-100, please amend lowest and highest Keypad ID as needed.

5. Options



Write Raw Data to Excel File: This allows you to create a new or use an existing Excel File to Store your data.

Please note, that it will take a few seconds while displaying the result to write data to an Excel file. Please be patient. The Data will be written while result is shown. You cannot ask a new Question while the process is running (approx. 5-7 seconds)

Create Word Document for each Question allows you to create a document in Richt Text Format for each question with the results in it for Print Out.

Show Percentage: Will Display Percentage in the Output Screen by Default. This can be switched when the result is displayed by pressing **F7** on your Keyboard.

Hide Title: When overlaying the Application on a PowerPoint Slide, we suggest to Hide the Title bar and show the question and answers inside PowerPoint.

Full Screen Output: Will display the output Screen as full Screen. This is useful when you display the Title and have a non-transparent Window to Overlay the Active application (e.g. PowerPoint).

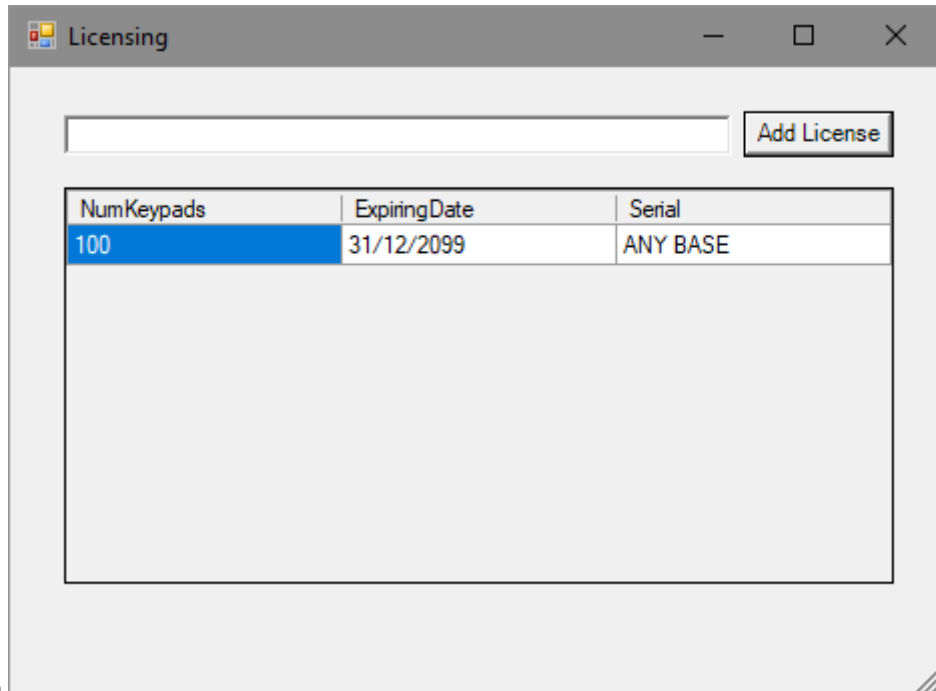
BarColor: Set the Bar Color for the Chart. Select one of the default colors available or press the advanced tab to create/use your own color.

Text Color: Select the Text Color for the Title, Bar Labels, Average and Number of Responses.

FONT: Select your own Font and Size for the Title, Average and Number of Responses. Barlabels will only take the Font Type, but not the Size.

Background Color (Chart Output): Select the Background color of the OutPut (Transparent by Default).

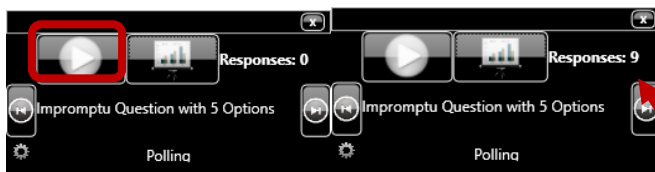
6. Licensing



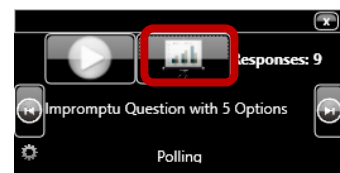
Licensing: Add a License provided by Infowhyse® GmbH to work with more than 100 Keypads.

7. How to Vote

After setting up your Hardware and preparing your question, select your question and press the “Play” (Start Polling) Button.

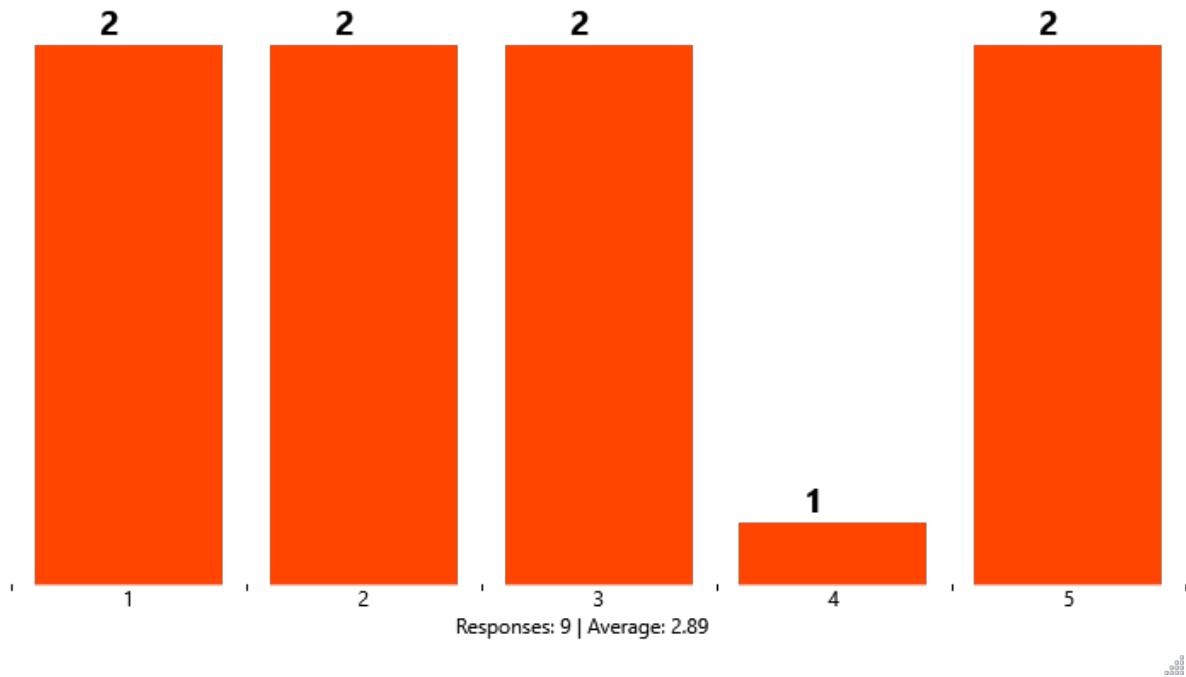


The Polling information will show “Polling” and the Responses will increase with each vote received.

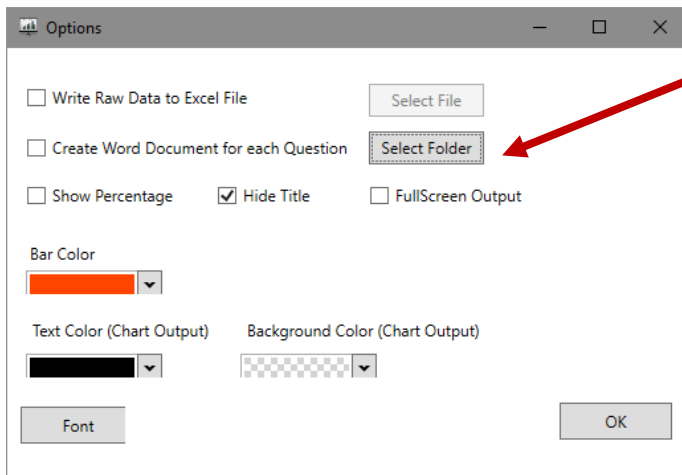


When finished, press the Chart to Stop the Polling and show the result.

Result will be displayed.



Pressing OK on this Display will exit the output and save the Output as a PNG in the selected folder



If no folder is selected or an invalid folder is selected, the Picture will be saved to your desktop.